

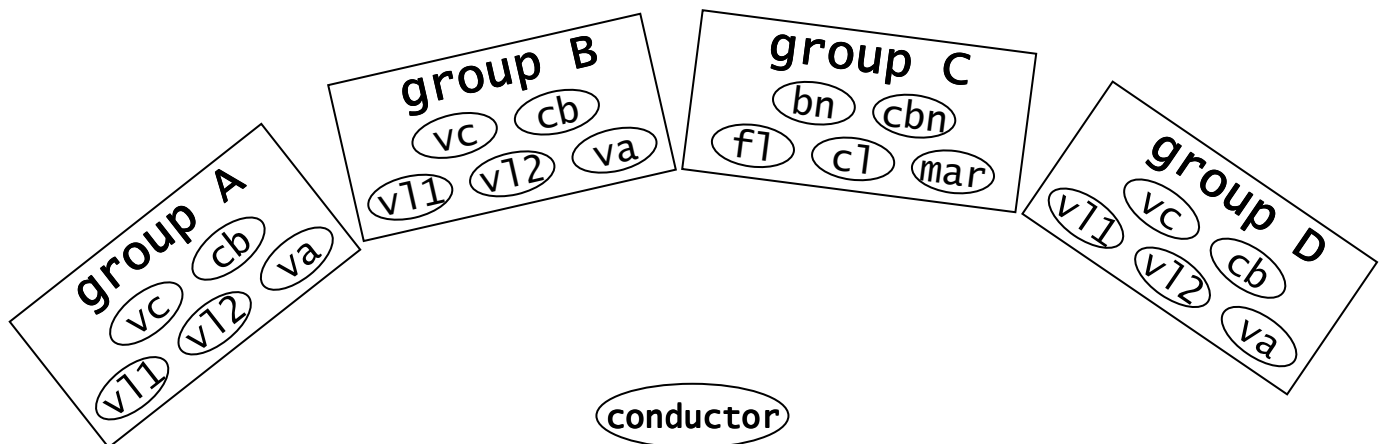
PULS

by Guido Kramann

1st movement	♩ = 120	2'03''
2nd movement	♩ = 48	3'44''
3rd movement	♩ = 144	1'35''
4th movement	♩ = 108	2'46''

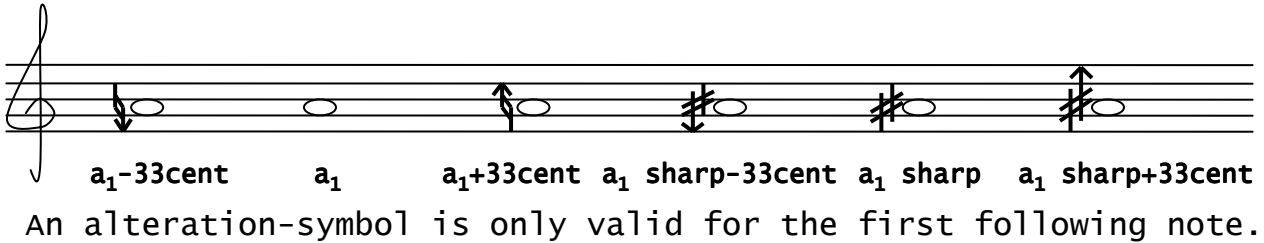
6 violins	(vl)
3 violas	(va)
3 violoncellos	(vc)
3 contrabasses	(cb)
1 traverse flute	(fl)
1 B-clarinet	(cl)
1 bassoon	(bn)
1 contrabassoon	(cbn)
1 marimba	(mar)

arrangement on stage

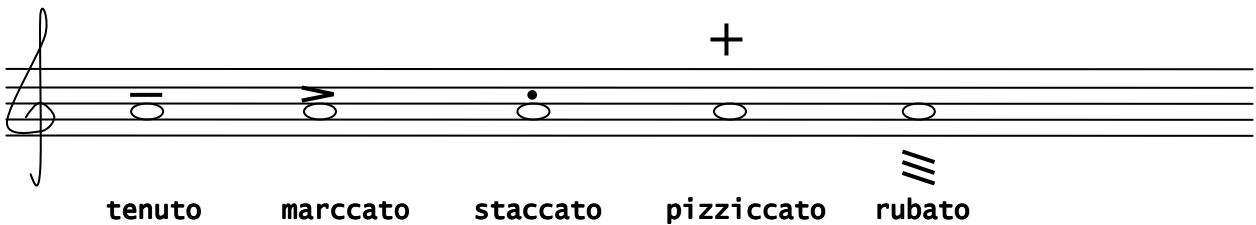


notation symbols

alteration in 1/6-tones



articulation



dynamics

pp pp+ p- p p+ mp- mp mp+ mf- mf mf+ f- f f+ ff- ff
increasing order

Composition method

The entire piece is a constructive composition.
The construction was supported by a self-written computer-program.
The composition was done in a not-tempered tone-system and
then projected in the tempered one leaving several 1/6-tones
where they fit well as „artefacts“.