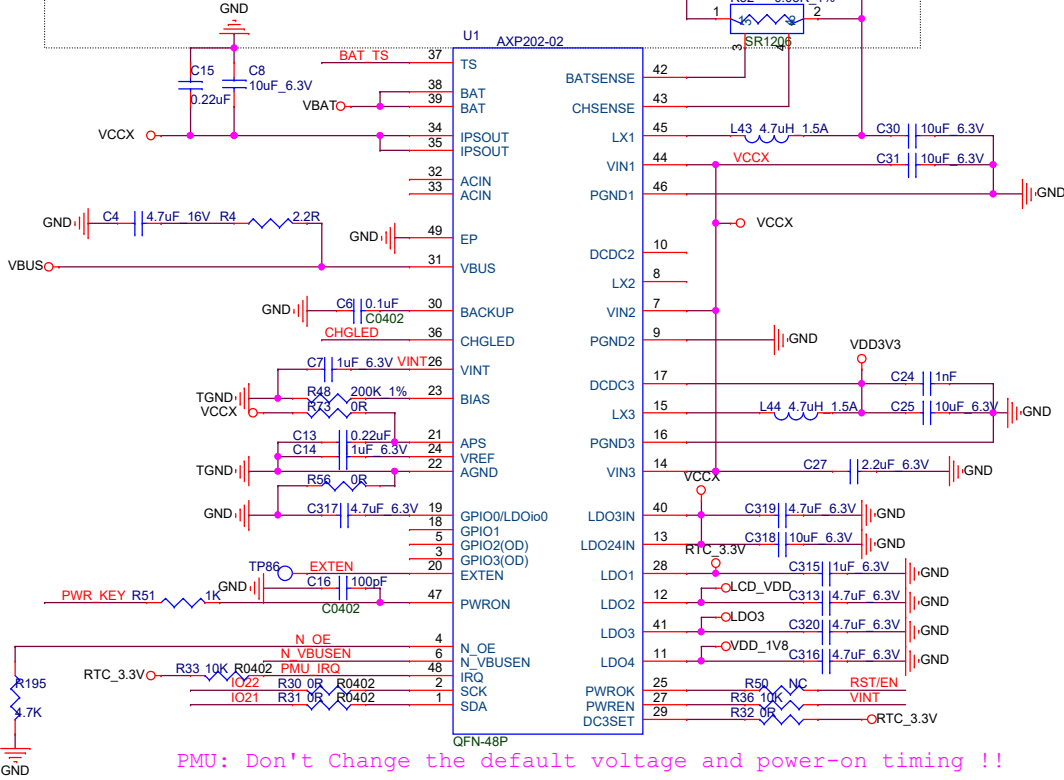
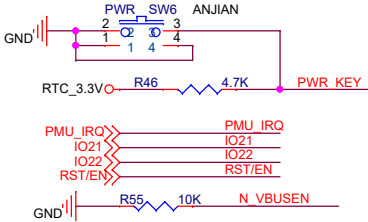
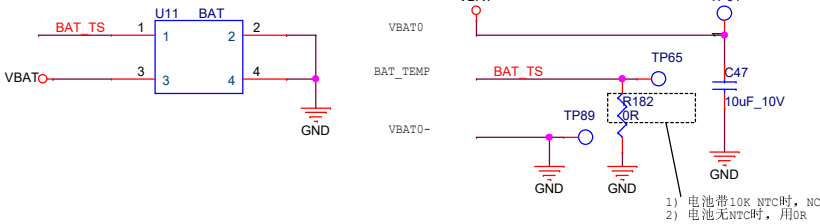
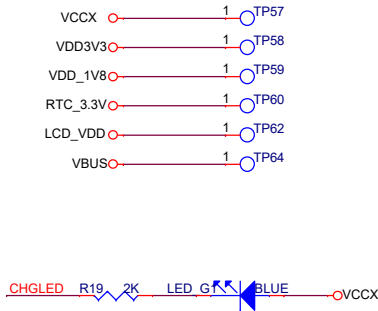


SR1206 PCB Footprint show as below
Add pin3, pin4 superposed on normal R1206 Footprint pin1, pin2
to make sure the signal is sensed from resistor PAD directly

The diagram illustrates the SR1206 PCB footprint and its electrical connections. It shows a GND connection, a VBAT supply, and a network of capacitors (C28, C33, C402) and a resistor (R52) connected to the SR1206 component. The component is labeled U1 AXP202-02.

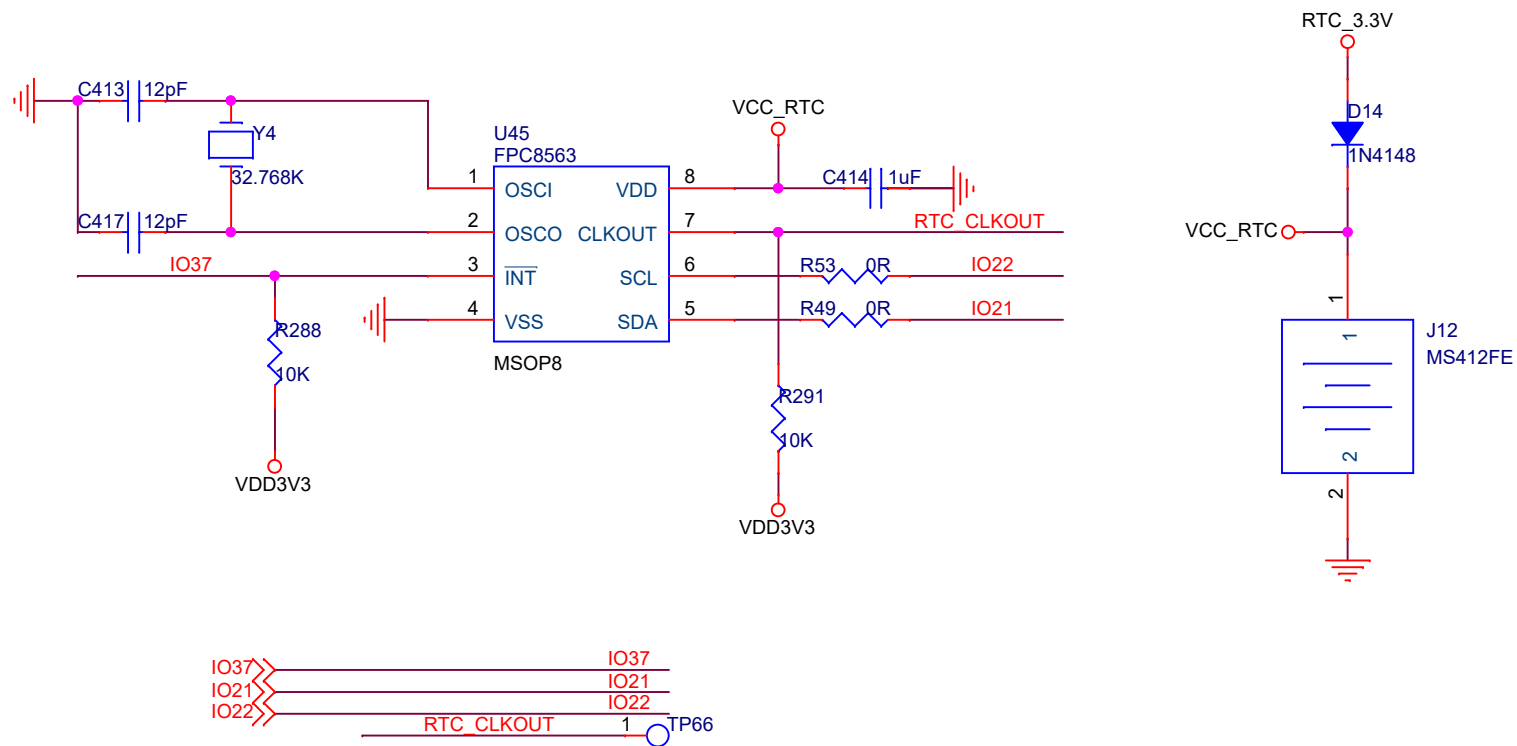


PMU: Don't Change the default voltage and power-on timing !!



Title			
T_WATCH_2020			
Size	Document Number	Rev	
B	2.xp202	V1.0	
Date:	Thursday, February 27, 2020	Sheet	2 of 6

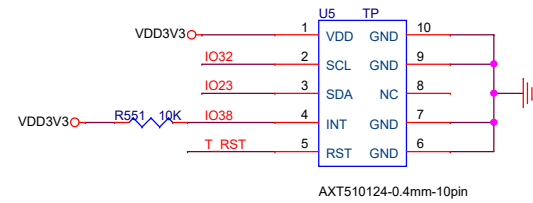
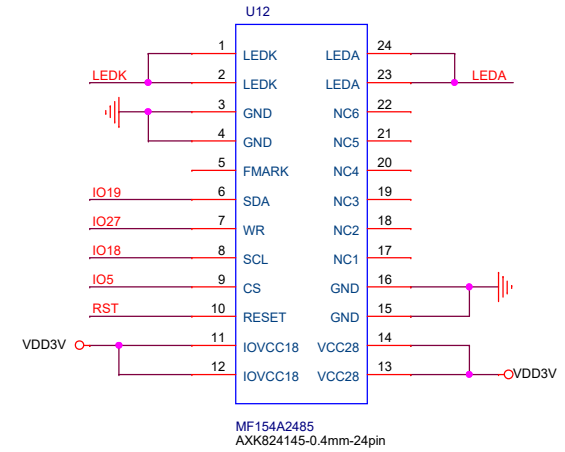
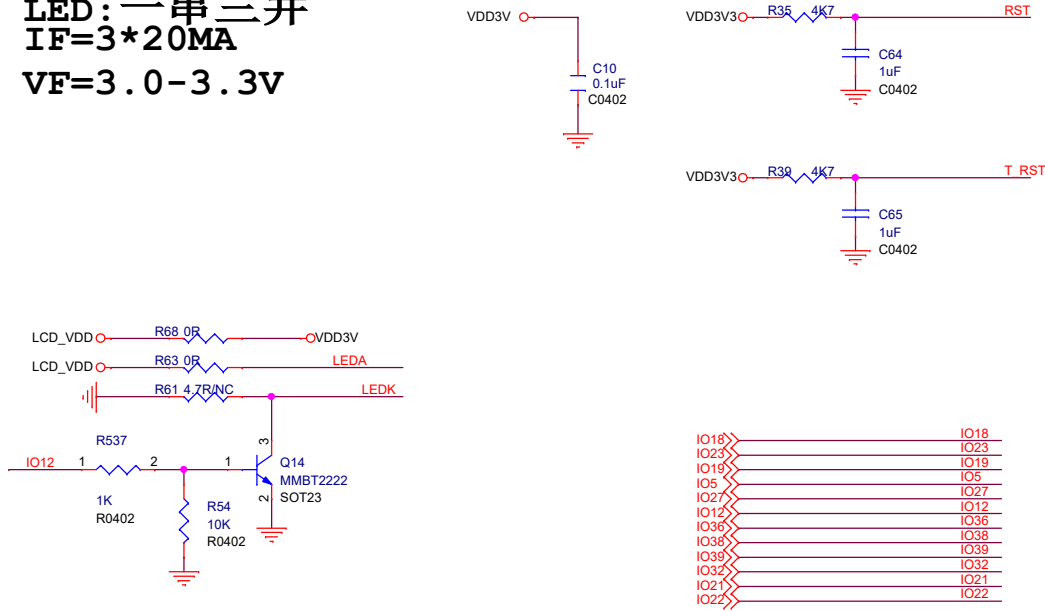
Title			
T_WATCH_2020			
Size B	Document Number		Rev
	3.ESP32_6X6		V1.0
Date:	Thursday, February 27, 2020	Sheet	3 of 6



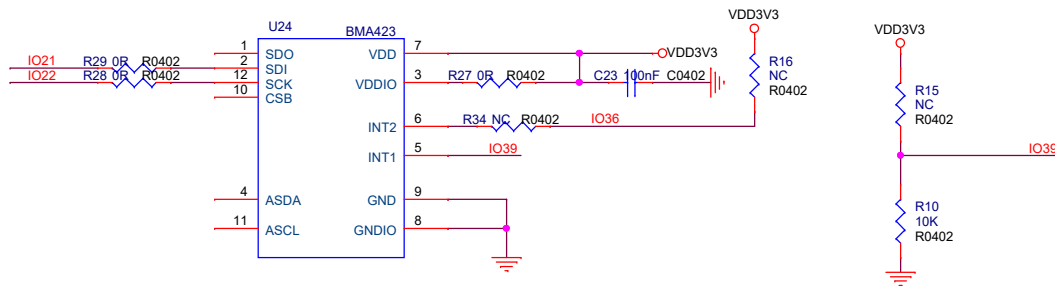
Title		
T_WATCH_2020		
Size	Document Number	Rev
A	4.RTC	V1.0
Date:	Thursday, February 27, 2020	Sheet 4 of 6

LED:一串三并
IF=3*20MA
VF=3.0-3.3V

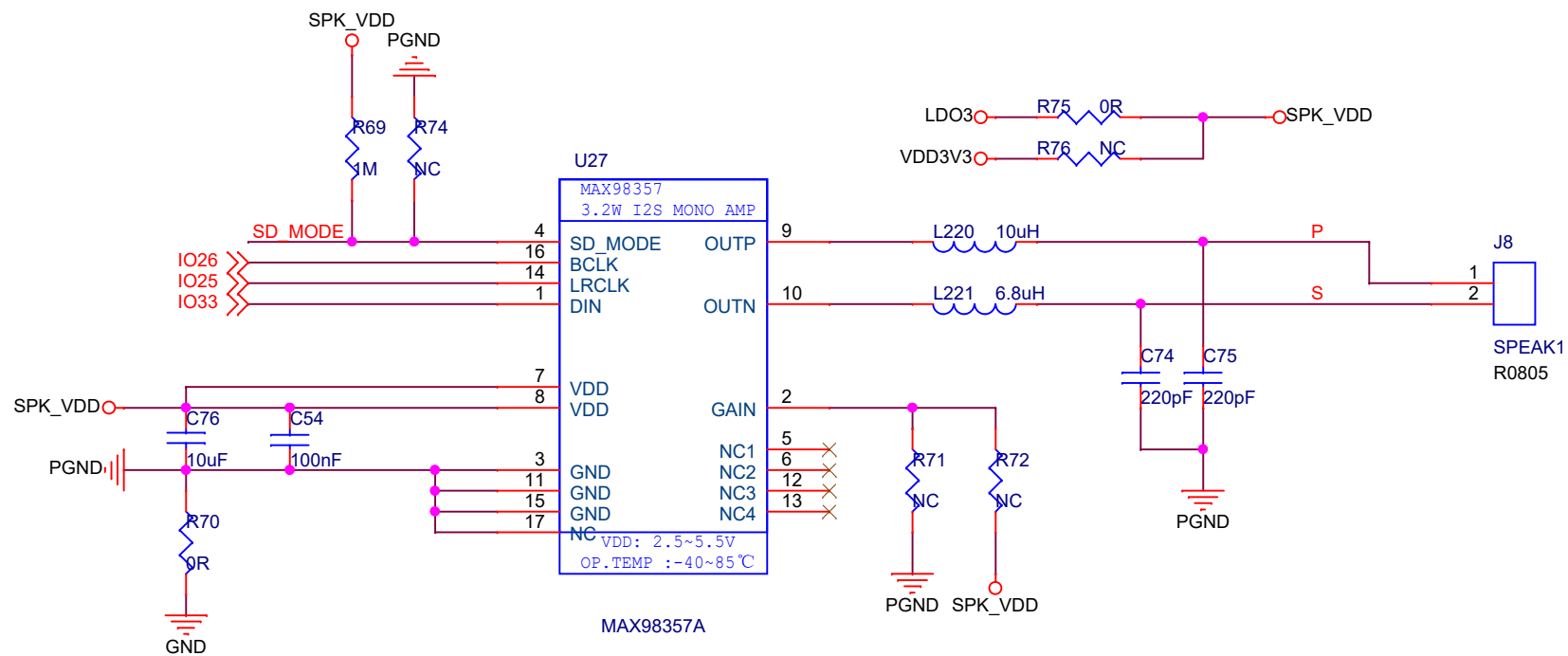
LCD_1.54-TOUCH



SENSOR



Title		
T_WATCH_2020		
Size	Document Number	Rev
B	5.LCD	V1.0
Date:	Thursday, February 27, 2020	Sheet 5 of 6



Min : 3mA
Max : 120mA

Title		
T_WATCH_2020		
Size	Document Number	Rev
A	6.audio	V1.0
Date:	Monday, March 09, 2020	Sheet 6 of 6